

AION

CG MOTORS

# THE e:XTRAORDINARY



**8** Years  
Or 1,50,000 Km  
Warranty  
On Battery & Motor

**5** Years  
Or 1,20,000 Km  
Warranty  
On non-moving parts







## EXTRAORDINARY INTELLIGENCE

### ADiGO Space Smart Cockpit

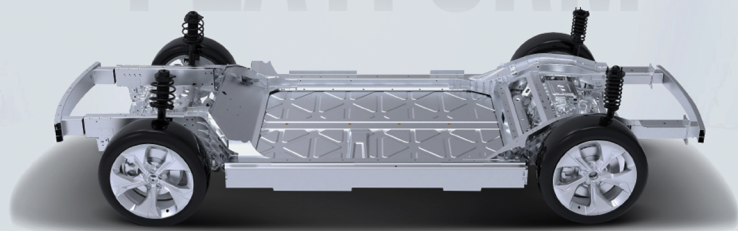
Smart voice control with an  
interactive, intelligent cabin system



### Big Infotainment System

Large 14.6 inch display showing  
key driving information clearly.

## AEP 3.0 PLATFORM



### AEP 3.0 Platform

The latest pure-EV platform (AEP 3.0)  
engineered for electric vehicles improves  
structural rigidity and stability by 20%.



### Front Center Airbag & Distal Airbag

Enhanced protection with up to 7 airbags including a center  
airbag between driver & passenger reducing injury risk by 32%.



▶ ADAS Level 2

### High Computing Power Intelligent Driving

Advanced computing for accurate  
and reliable driver assistance.



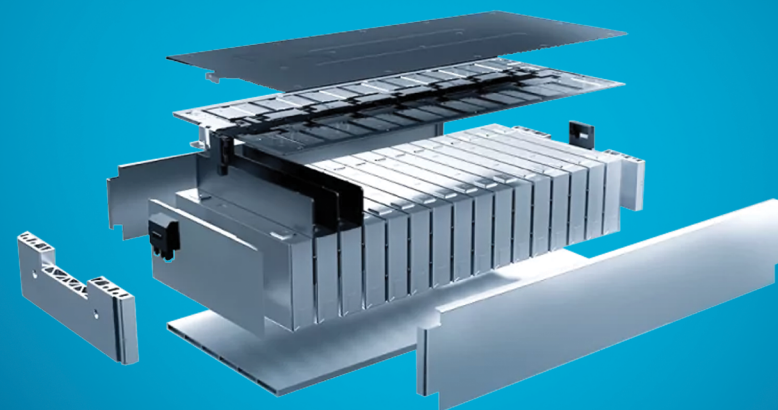
### Intelligent Driving Assistance

Next-generation features to  
support safe daily driving.



### Comfort Stop Technology

Intelligent braking that ensures smooth,  
stable stops for safer driving comfort.



### Second-Generation Magazine Battery

Advanced LFP battery technology with improved  
safety, temperature control, and long-lasting reliability.



The advertisement features a large background image of the AION V interior, showing the front seats with orange leather upholstery and a large central infotainment screen. A red diagonal line separates the interior view from the exterior view of the car. The exterior view shows the AION V in orange and silver, parked on a dark surface. The text "Heated & Ventilated Seats" is located on the left side of the interior view, and "50 W WIRELESS CHARGING" is located on the right side of the interior view. The text "EXTRAORDINARY CONFIDENCE" is located on the right side of the exterior view, and "Safety that exceeds global standards with a high-strength body and special design." is located below it.

Heated &  
Ventilated Seats

50 W  
WIRELESS  
CHARGING

## EXTRAORDINARY CONFIDENCE

Safety that exceeds global standards with  
a high-strength body and special design.



# EXTRAORDINARY FEATURES

## 8-Point Massage Seats

Premium 8-point electric massage system with 20 levels of adjustable intensity for a true relaxation experience.

## Immersive Live Music Enjoyment

3-way, 9-channel Premium Sound System with a 3-meter depth sound field, delivering an immersive experience inspired by Bang & Olufsen.

## Folding Tray Table

Convenient rear tray table to place food, drinks, or a laptop while traveling.

## Three-Layer Trunk

Large triple-layer luggage space 427 liters expandable to 978 liters with **Spare Tire**.

## Smart Refrigerator

6.6-liter smart mini-fridge temperature adjustable from  $-15^{\circ}\text{C}$  to  $50^{\circ}\text{C}$  for cooling or warming beverages.

## Moonroof with Shades

Transforms every drive into a scenic adventure connects with the world outside.



# EXTRAORDINARY DESIGN

## Cyber Sharp Front

Sharp-edged cyber-inspired front design for a distinctive and standout appearance.

## Sharp Waistline

Sleek aerodynamic side lines that enhance the sporty and dynamic character.

## Cyber Headlight & Taillight

Futuristic cyber-style LED lighting with high visibility and a bold, modern look.

# EXTRAORDINARY COMFORT

A premium interior crafted with 100% soft-touch materials for a refined, comfortable cabin feel.




A silver AION V SUV is shown from a rear three-quarter view, parked in a modern, brightly lit charging station. The car's rear features the 'AION' and 'AION V' badges. To the right, a white and orange charging station with a black cable is visible. The background consists of warm-toned walls and a large glass window.

## EXTRAORDINARY ENERGY

### Super Charge

Ultra-fast charging capability — 20% to 80%  
within just 30 minutes.

An orange AION V SUV is shown from a front three-quarter view, driving on a road that curves along a body of water. The car is in motion, with a blurred background of mountains and water. The 'AION' and 'AION V' badges are visible on the front of the car.

### Endurance

Long-range performance of

## 650 KM

Energy-efficient motor with  
consumption of 14.1 kWh/100 km  
for economical, long-distance travel.



# FEATURES AND SPECIFICATIONS

Basic Information	Elite	Luxury
Length*Width*Height (mm)	4605*1854*1686	
Wheelbase (mm)	2775	
Seating Capacity	5	
Max. Power (kW)	100kW	
Max. Torque(Nm)	240	
Ground Clearance (mm)	185mm	
Acceleration(0-100km/h)	7.9	
Drive Mode	FWD	

Exterior		
LED Headlights (with Height Adjustment + Alarm for Headlights on + Follow Me Home Function)	•	•
Automatic Headlights	•	•
LED Daytime Running Lights	•	•
Rear LED Fog Light	•	•
LED Taillight	•	•
Flush door handle	•	•
Front/rear windshield+four-door green glass	•	•
Defogging Rear windshield	•	•
Panoramic Moonroof with Electric Sunshade	•	•
Outside rearview mirror with electric Folding & Heating	•	•
Outside rearview mirror memory	•	•
19" aluminum alloy wheel	•	•
Roof Rail	•	•
Boot space	427 L	

Battery and Range		
Magazine Battery		•
Type of Battery		LFP
Battery Capacity (kWh)	64.5	75.3
Range (NEDC)	520KM	650KM
EU Standard (AC: TYPE 2; DC: CCS2)	•	•
AC Charging 6.6 kW	•	•
Vehicle-to-load(V2L)	•	•

Entertainment and Technology		
8.88" High-Definition Full LCD Instrument Panel	•	•
14.6" High-Definition Touch Control Central Screen	•	•
FM	•	•
Apple Carplay + Android Auto	•	•
Driver Monitoring System(DMS)	—	•
Bluetooth	•	•
9 Speakers	•	•

Interior	Elite	Luxury
Leatherette-trimmed steering wheel	•	•
4-way adjustable steering column	•	•
PVC seats	•	—
PVC/Leather seats	—	•
6-way power adjustable driver seat	•	•
4-way power adjustable passenger seat	•	•
Driver & Co-Driver Seats memory	•	•
Heated/ventilated driver & front passenger seats	•	•
Eight-point massage driver & front passenger seats	—	•
Driver & front passenger seats memory	•	•
Second-row tray table (Max Load 10 kg)	—	•
Inside anti-glare rearview mirror	•	•
Sun visor (small vanity mirror + light)	•	—
Sun visor (big vanity mirror + light)	—	•
Reclining second-row seats (seat back angle adjustables up to 137°)	•	•
Rear Seats Center Headrest and Central Armrest+4/6 Split Folding	•	•
Front soundproof windshield	•	•
Front-row soundproof window glass	•	•
Front and Second Row One-touch Up and Down Power Windows (Anti-pinch)	•	•
Dual-zone Automatic Air Conditioning	•	•
Heat Pump	•	•
Rear A/C outlet	•	•
Smart power liftgate	•	•
On-board smart refrigerator (3 modes:freezing/refrigeration/heating)	—	•
Front-row 12V power supply	•	•
Trunk 12V power supply	•	•
PM 2.5 filter	•	•
PM 2.5 sensor	—	•
Intelligent ambient light	•	•
Wireless phone charging 50W>	•	•
Front-row USB port/ Type C charging port+second-row USB port	•	•
Spare tire with tools	•	•

Safety	Elite	Luxury
No. of Airbags - 7	•	•
ADAS (LEVEL-2)	•	•
ESP+ABS+EBD	•	•
HBA (Hydraulic Brake Assist)	•	•
Hill-Hold Assist Control System (HHC) + Hill-Descent Assist Control System (HDC)	•	•
EPB +Autohold	•	•
I-pedal	•	•
TPMS	•	•
ISOFIX Child Safety Seat Fixtures	•	•
PEPS Passive Entry & Passive Start	•	•
Front Row Seatbelts with single-stage Pretensioners and Force Limiters	•	•
Front Row Seatbelts with Unfastened Reminders (Light and Sound)	•	•
Rear Row Seatbelts with Unfastened Reminders (Light and Sound)	•	•
Front seat belt with locking tongue (DLT)	•	•
Second Row Seatbelts with single-stage Pretensioners and Force Limiters	•	•
Second row middle seat 3-point safety belt	•	•
Engine Immobilizer (with Anti-theft Alarm)	•	•
Front and Rear Parking Sensors	•	•
Surround View Camera System	•	•

Driving Assistance		
Adaptive Cruise Control System (ACC)	•	•
DMS- Driver Monitoring System	•	•
Integrated Cruise Assistance (ICA)	•	•
Automatic Emergency Braking (AEB)	•	•
Forward Collision Warning (FCW)	•	•
Lane Departure Warning (LDW)	•	•
Emergency Lane Keeping Assist (ELKA)	•	•
Lane Departure Prevention (LDP)	•	•
Intelligent Speed Unit Control (ISLC)	•	•
Blind Spot Detection (BSD)	•	•
Door Open Warning (DOW)	•	•
Rear Crossing Traffic Alert (RCTA)	•	•
Rear Collision Warning (RCW)	•	•
Lane Change Collision Warning (LCW)	•	•
Traffic Sign Recognition (TSR)	•	•
Curve to Speed Control (CSC)	•	•

## COLOR OPTIONS:



## INTERIOR OPTIONS:



**CG Motors Pvt. Ltd.**  
Thapathali, Kathmandu  
+977 9802375643 / 75646 / 75012  
+9779707094205

Follow us on:

Authorized Dealer